

TC21 Conference:

Black and Minority Ethnic Student Participation in Initial Teacher Training

BRADFORD UNIVERSITY

Issues in recruitment, progression and careers

Alistair Ross and Uvanney Maylor

Institute for Policy Studies in Education
London Metropolitan University



INSTITUTE FOR
POLICY STUDIES IN
EDUCATION

Why do we need black and minority ethnic teachers?

How many BME students are entering the teaching force?

What are the demographics of the teaching force?

Why do BME students want to/not want to enter teaching?

The experience of BME students in their training

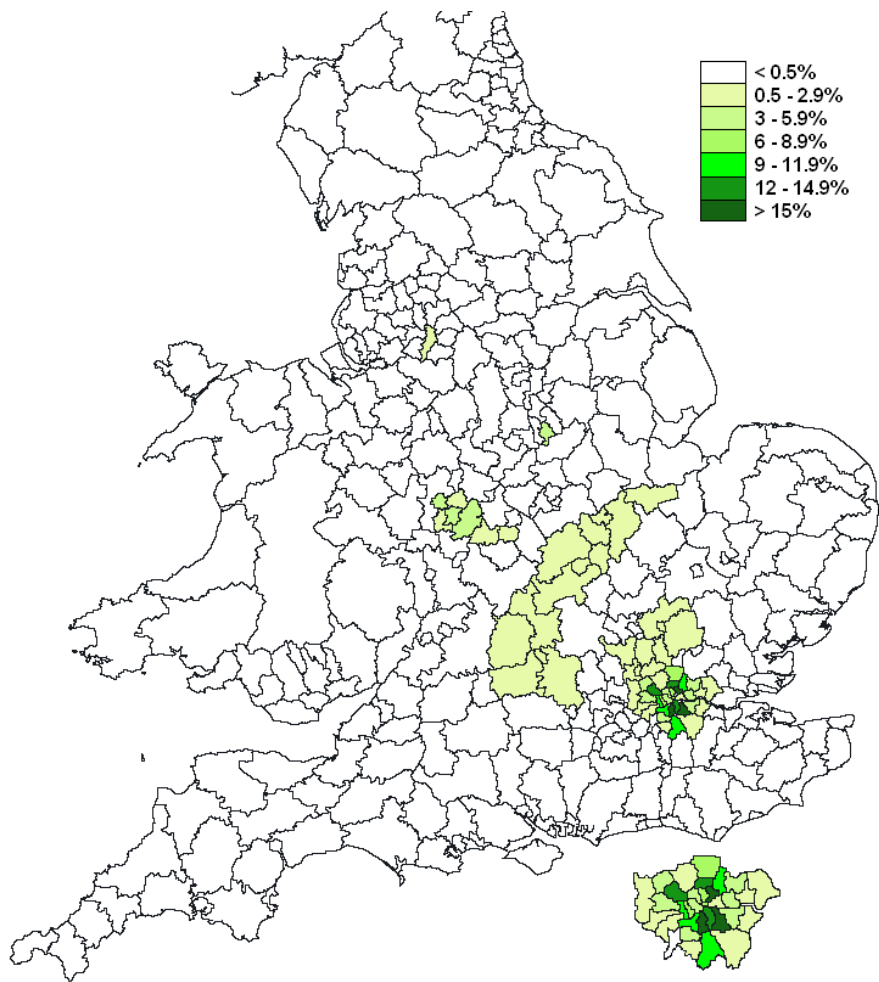
The experience of BME teachers in schools

What is the career pattern of BME teachers?

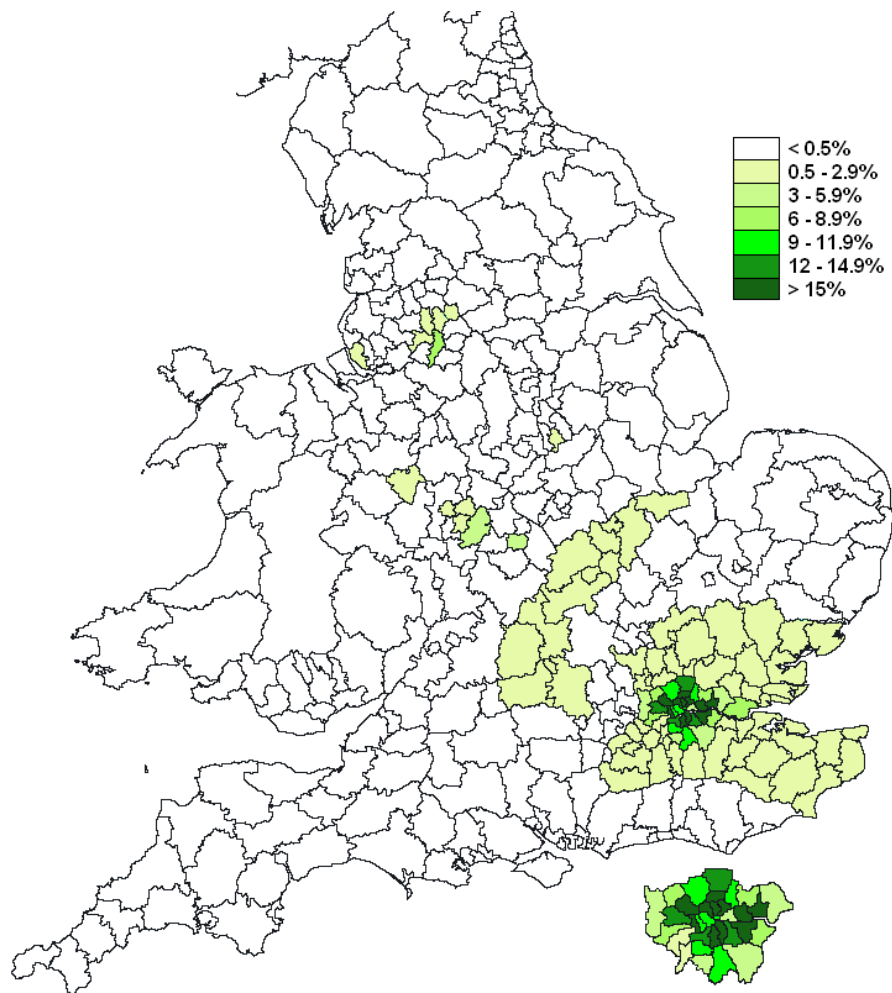
How many BME teachers become heads and deputies?

The future contribution of BME teachers

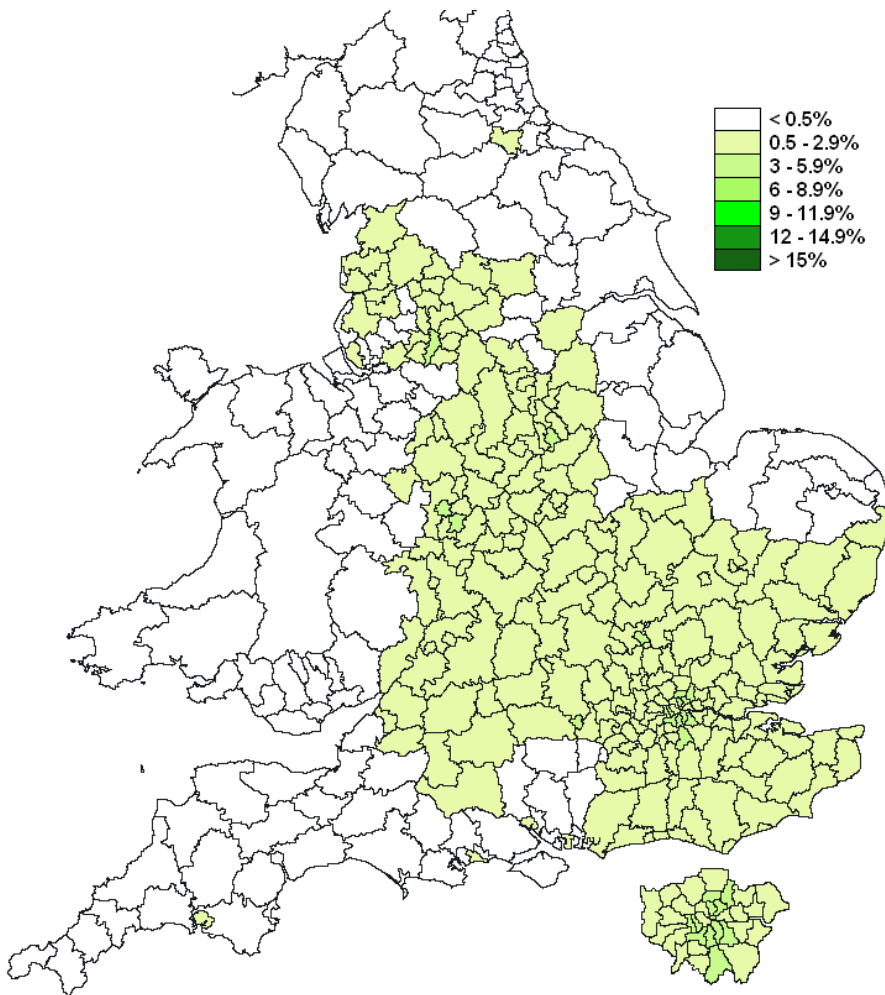
Black Caribbean Primary School Population



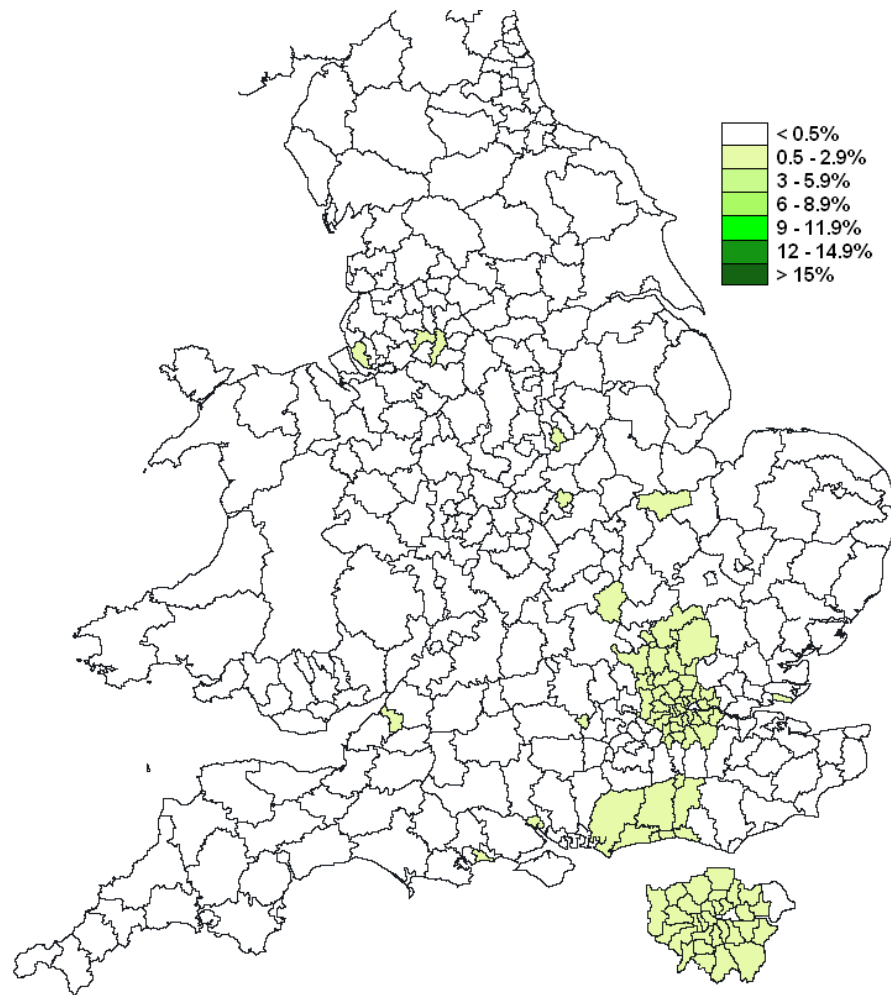
Black African Primary School Population



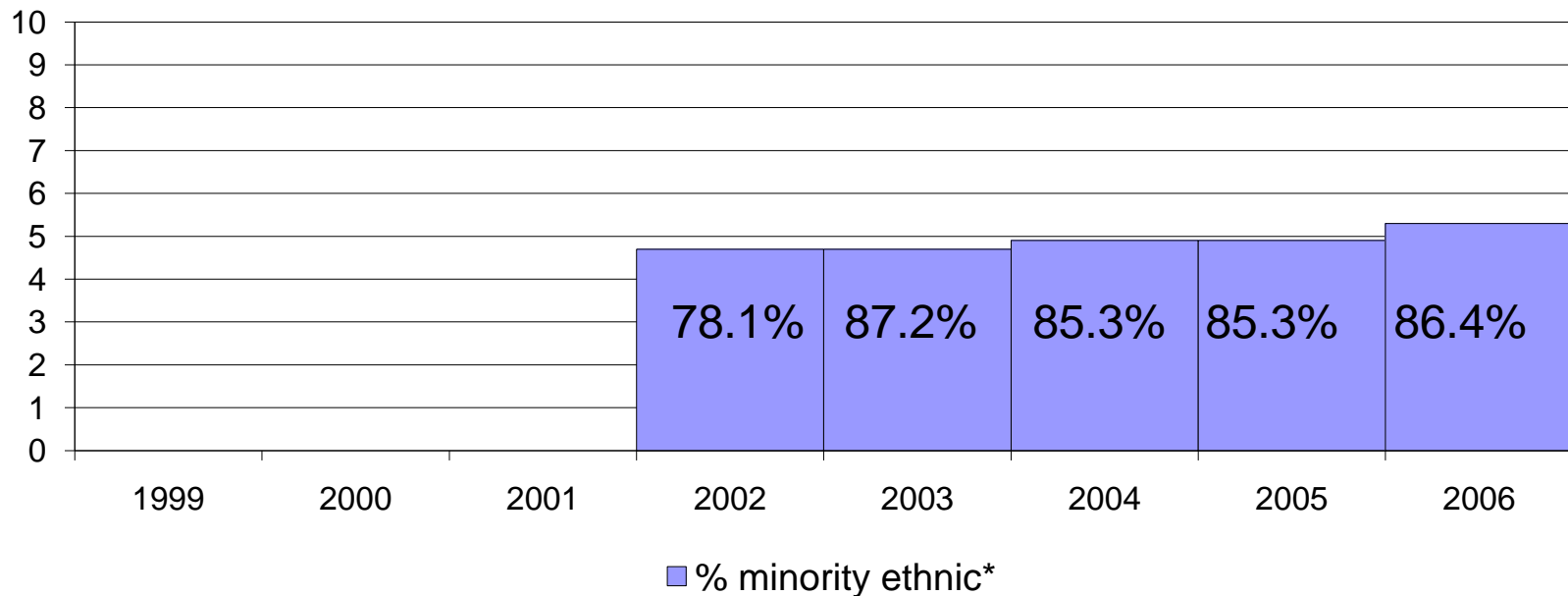
Mixed White and Black Caribbean Primary School Population



Mixed White and Black African Primary School Population

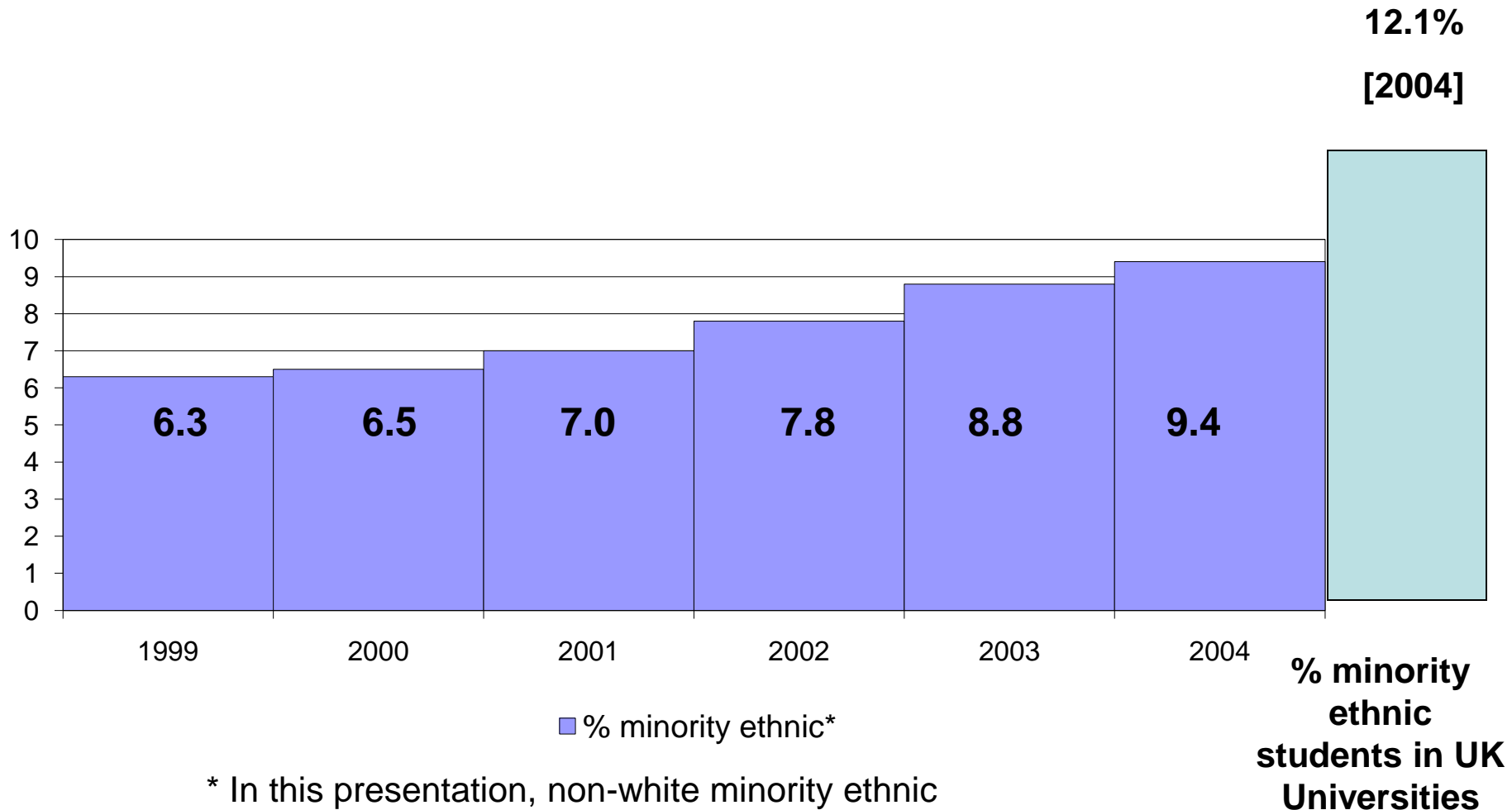


DfES reported % of minority ethnic teachers



* In this presentation, non-white minority ethnic

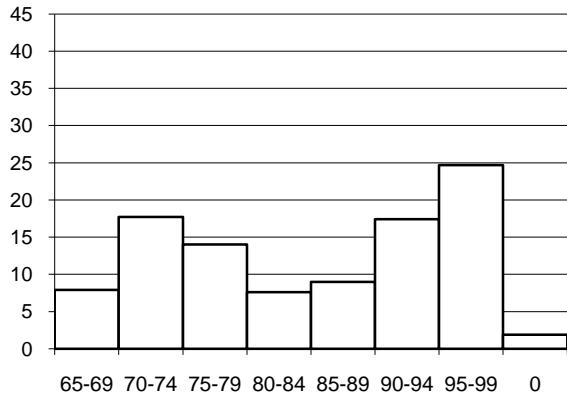
TDA reported % of minority ethnic teacher trainees recruited



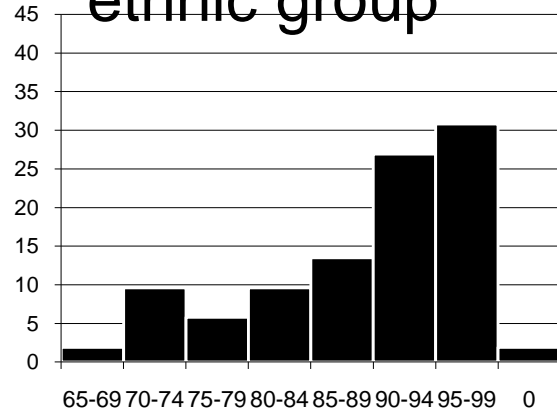
Given the 2004 DfES statistic of 4.9 ethnic minority teachers, and the known recent TDA recruitment, what must have been happening to recruitment in earlier years?



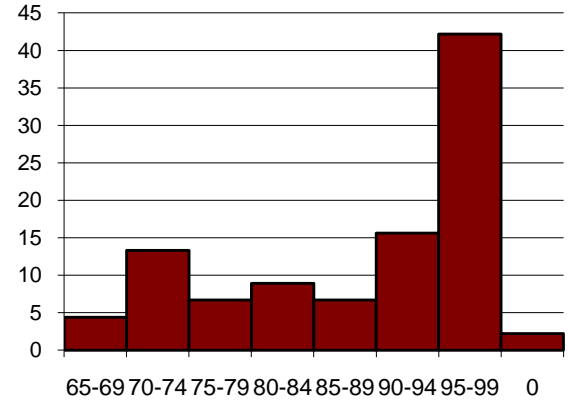
Teachers of 2001: when did they qualify, by gender and ethnic group



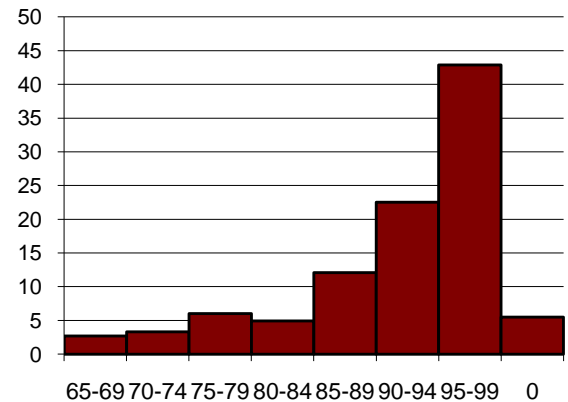
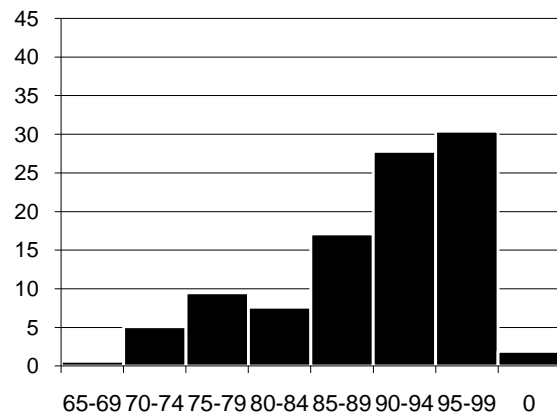
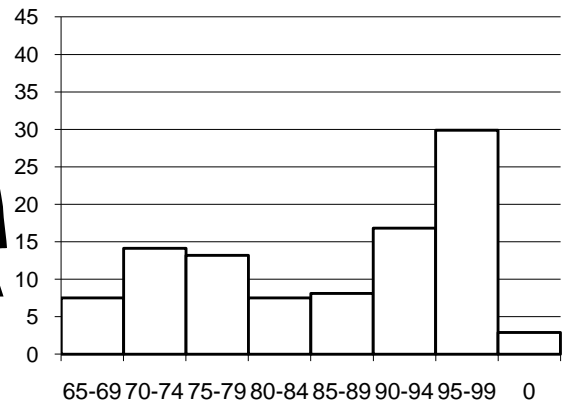
White teachers



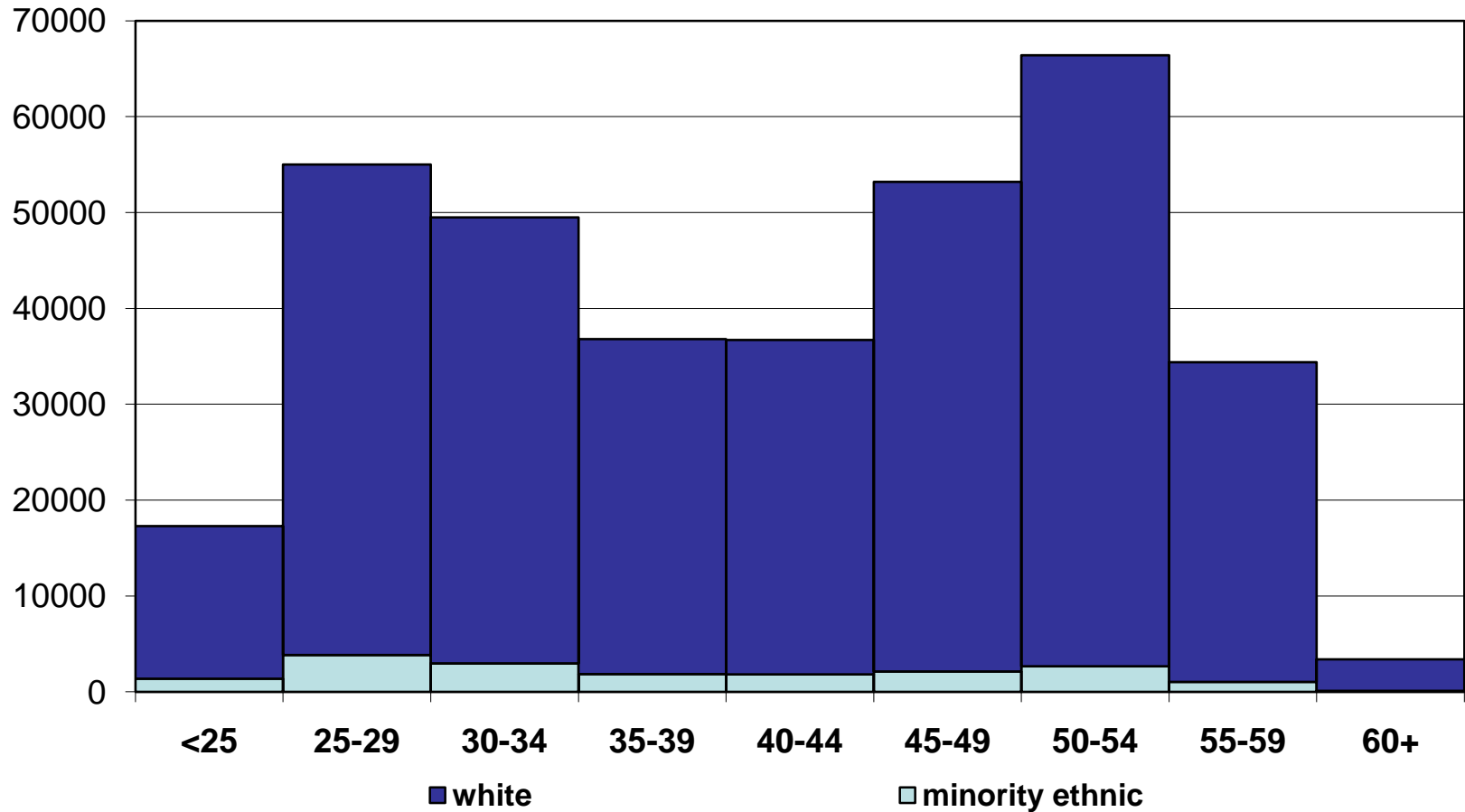
Black teachers



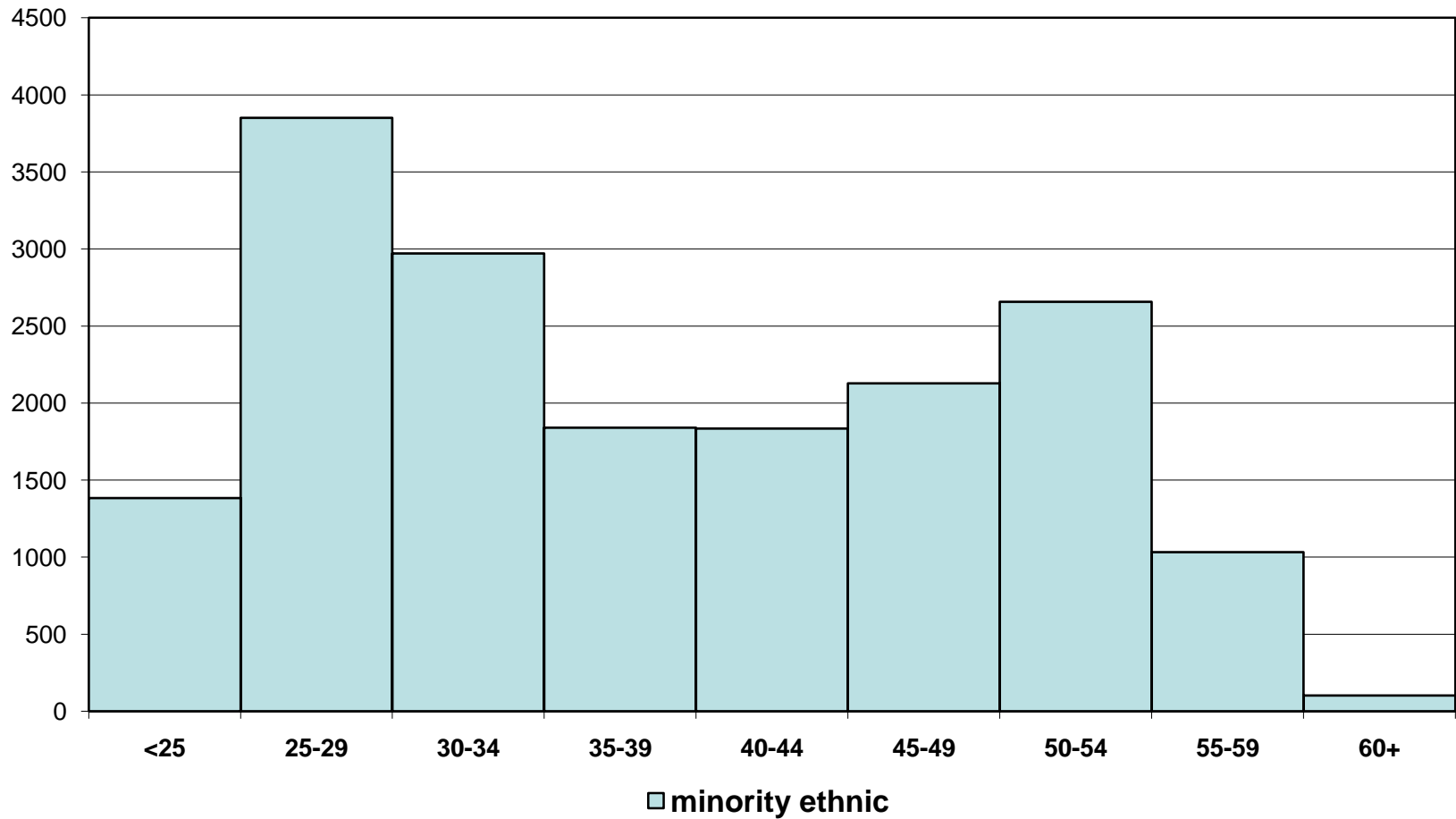
Asian teachers



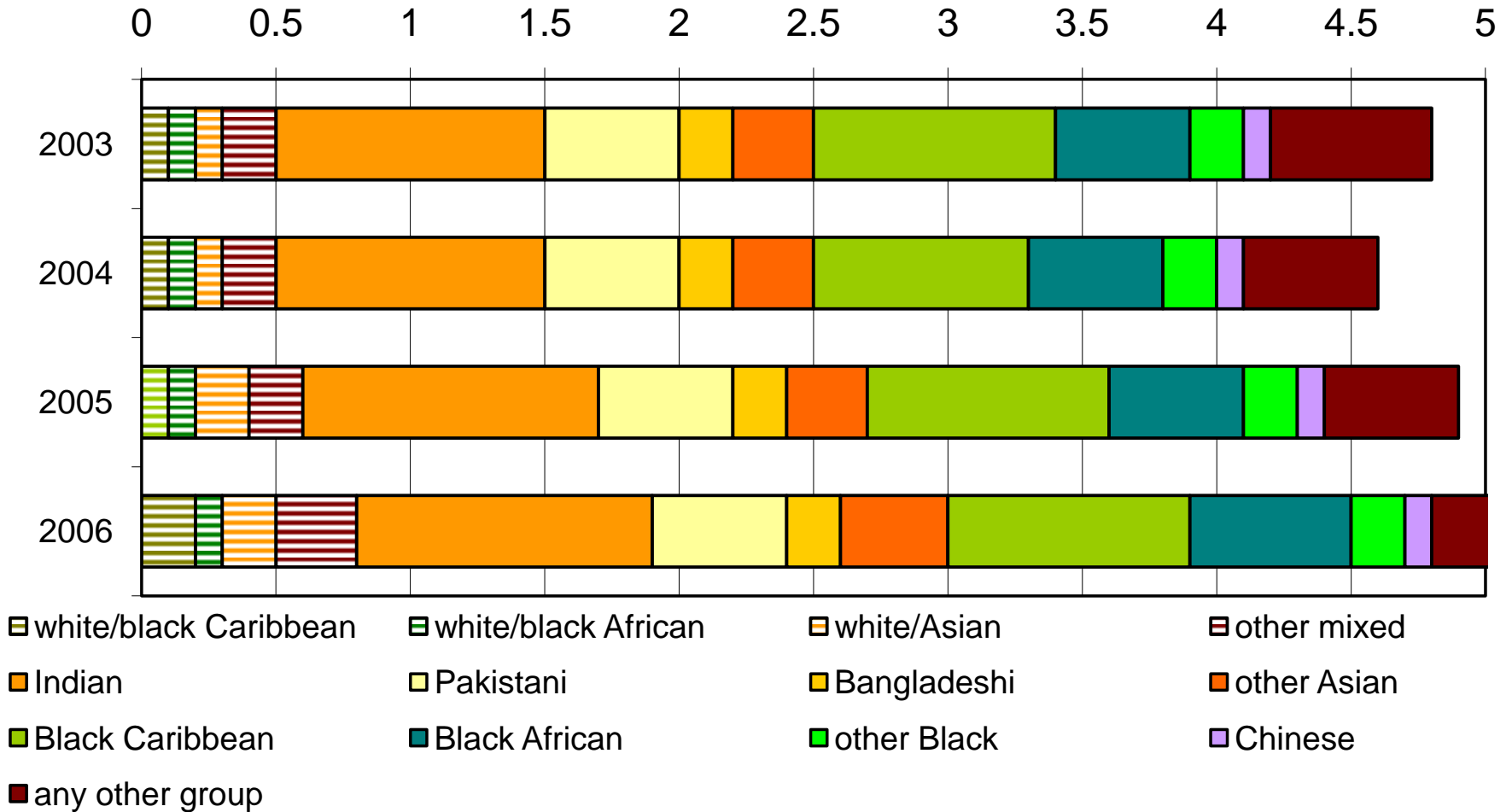
Age profile – white and minority ethnic teachers



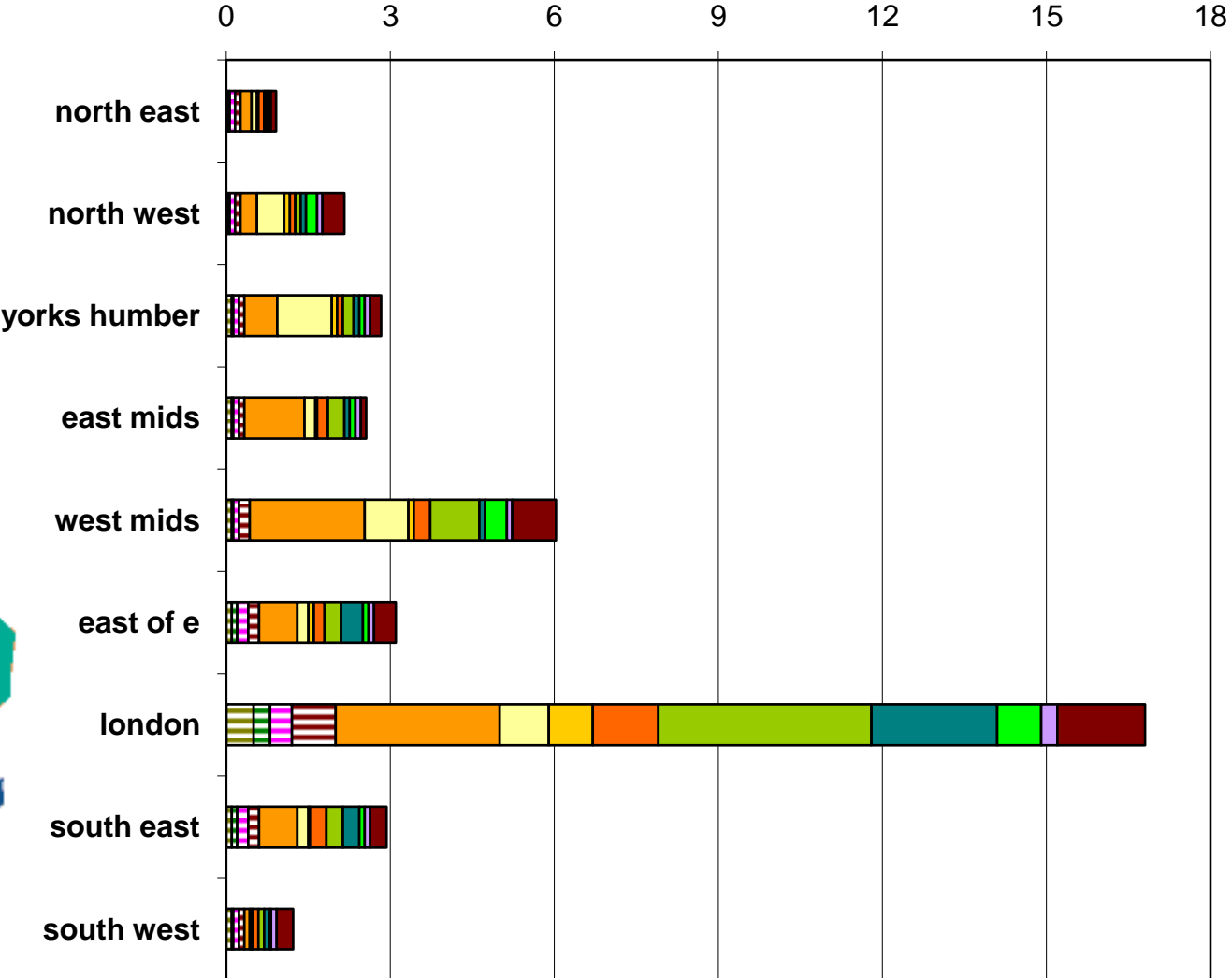
Age profile – minority ethnic teachers only



Minority Ethnic Teachers 2003-5:- distribution of particular minority groups

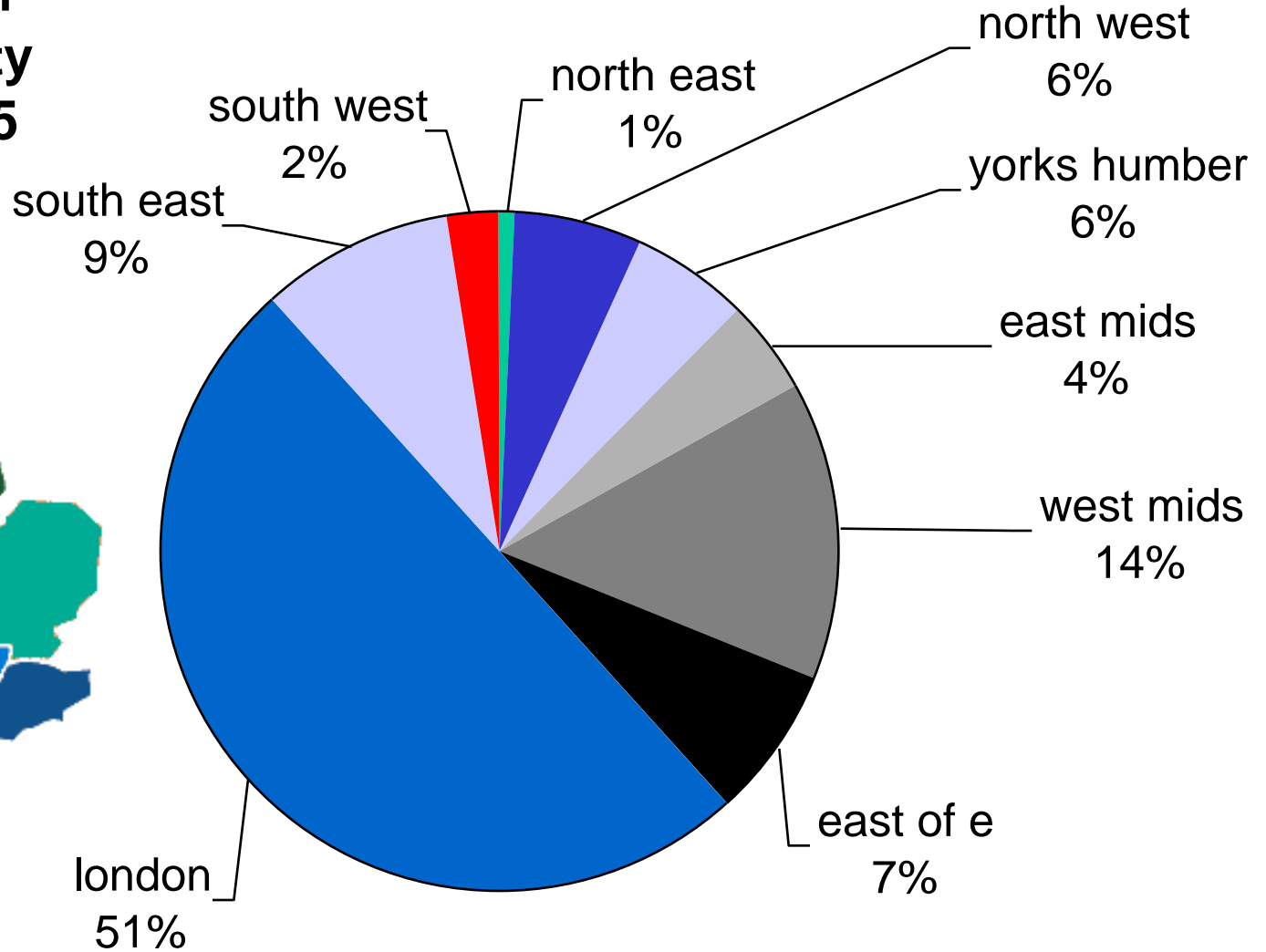


Distribution of ethnic minority teachers, 2005

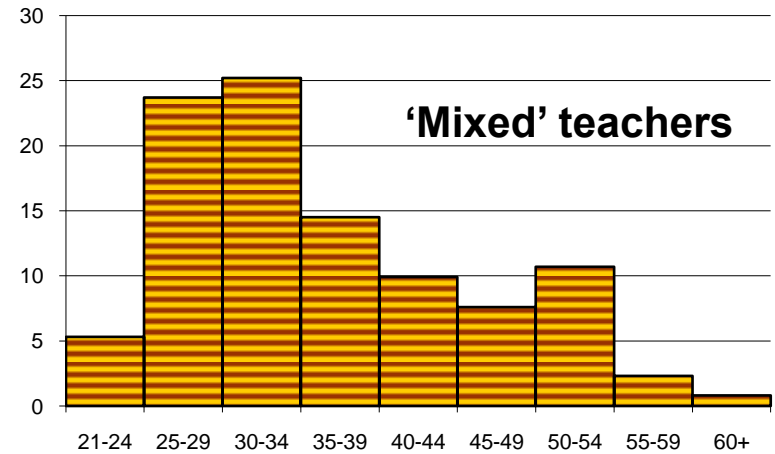
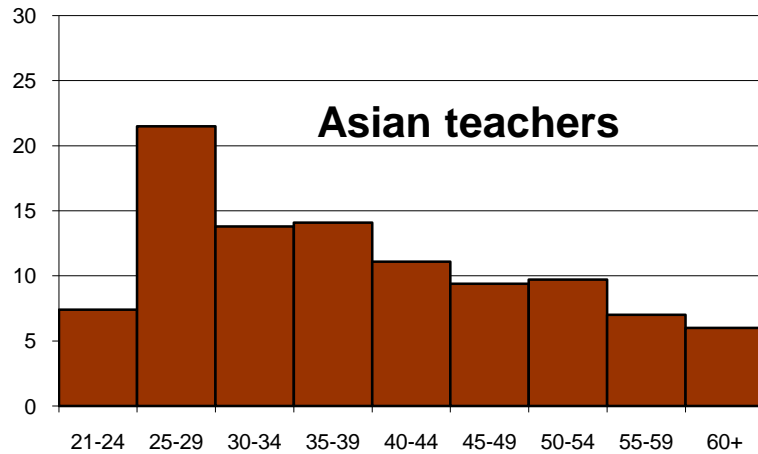
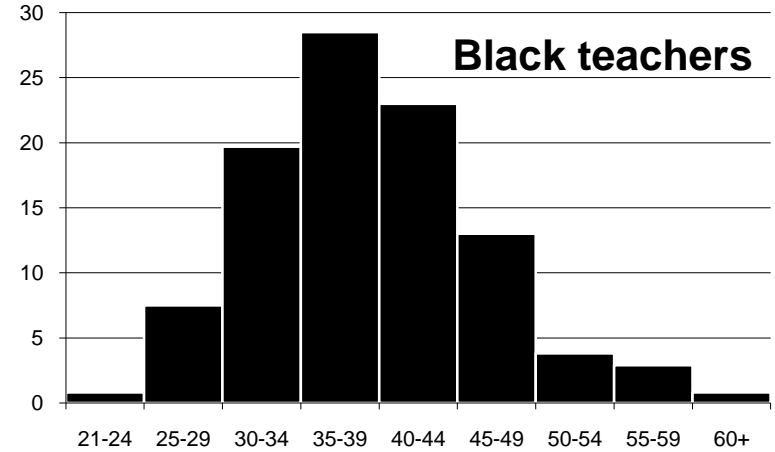
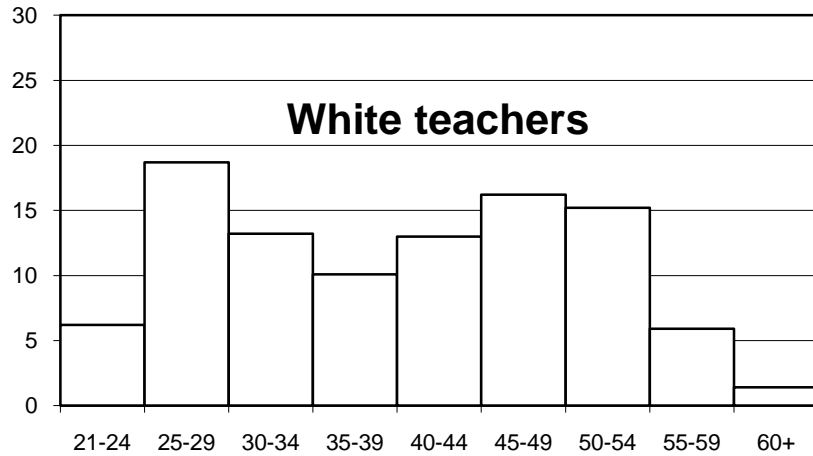


- white/black Caribbean
- white/black African
- white/Asian
- other mixed
- Indian
- Pakistani
- Bangladeshi
- other Asian
- Black Caribbean
- Black African
- other Black
- Chinese
- any other group

Distribution of ethnic minority teachers, 2005

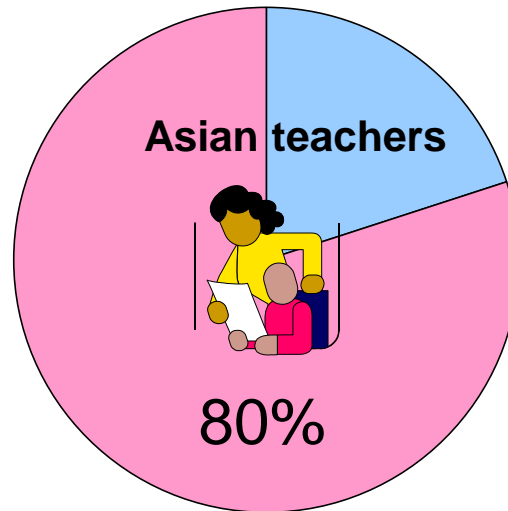
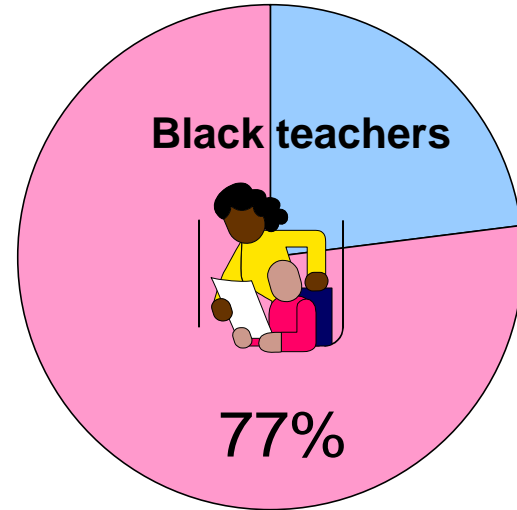
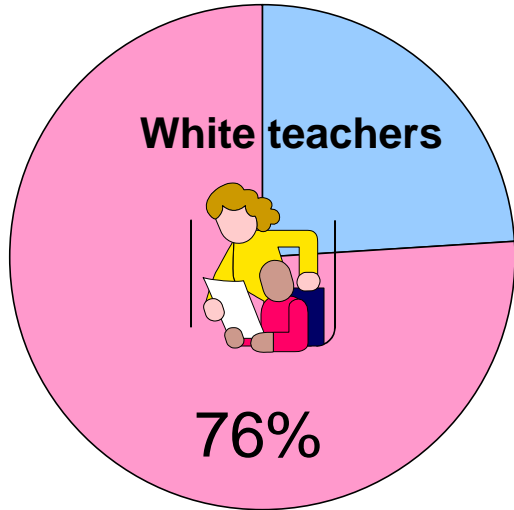


Age profiles of different ethnic groups, 2001

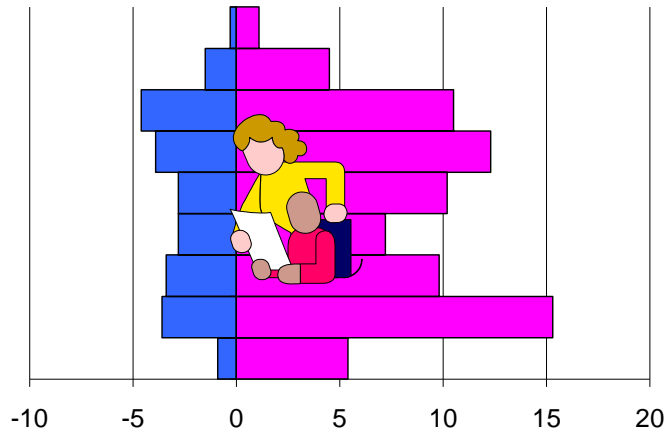


	average age on qualification (post 1989 qualified only)	average age of group (all teachers)
White	24.9	39.7
Black	27.7	39.0
Asian	26.9	39.0

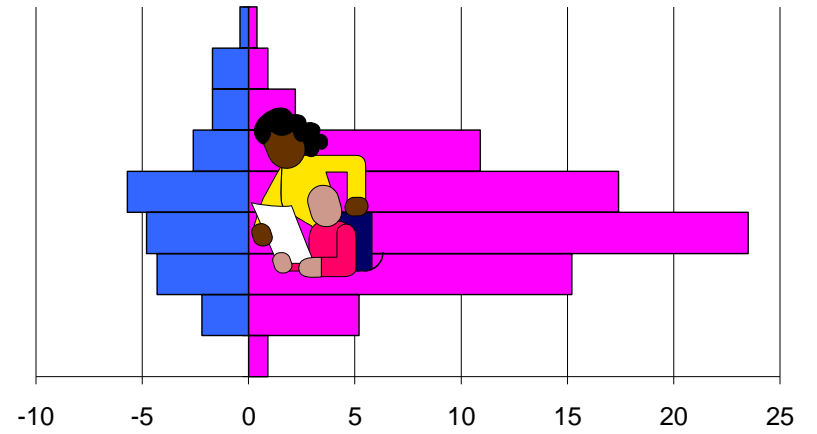
Gender ratios, different ethnic groups, 2001



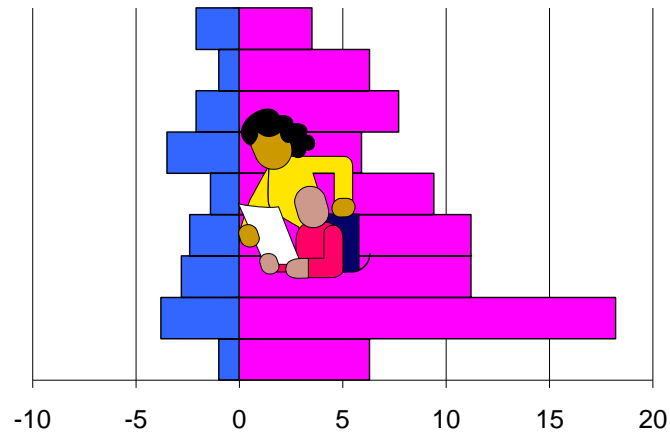
Age/sex pyramids, different ethnic groups, 2001



White teachers



Black teachers



Asian teachers